

FIELD OFFICE3845 NW 25th Street
Miami, Florida 33142www.micdot.com
1 888 838 5355**Miami Intermodal Center****News Clip**From: *Miami Today*, Thursday, July 12, 2012Subject: **World-class connectivity: It's so Miami, bureau says**Provided by: Jenine Spoliansky, Kommunikatz, Inc.
jspoliansky@kommunikatz.com

WEEK OF THURSDAY, JULY 12, 2012

SPOTLIGHT ON EXCELLENCE

MIAMI TODAY 19

World-class connectivity: It's So Miami, bureau says

More flights, more cruise ships, and new and better ways to get around town are making Greater Miami even more attractive to visitors from around the world.

"Miami's reputation as a world-class destination is taking a major leap forward this year," says William D. Talbert, III, CDME, president & CEO of the Greater Miami Convention & Visitors Bureau. "We are the only destination in the country where 50% of visitors come from outside the US.

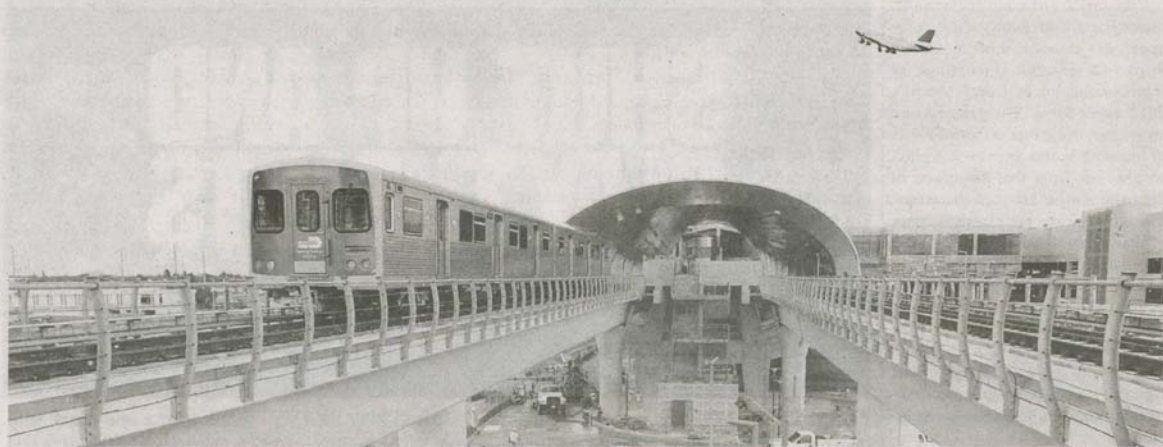
"With the New World Symphony's new campus on Miami Beach and new museums being built in downtown, our cultural offerings are growing by leaps and bounds.

"We have a downtown destination as exciting as South Beach, with great restaurants and shopping; the Design District and Wynwood; Coconut Grove and Coral Gables; and so much more.

"Ultimately, all of this means people will want to lengthen their stay – which translates to more revenue and more jobs."

The final piece, says Mr. Talbert, is a transportation infrastructure that makes getting to and around Miami easier than ever before.

Miami International Airport continues to increase passenger



The new AirportLink Metrorail Extension will whisk passengers to downtown in minutes, solidifying Miami as a world-class destination.

service, "and that's the bellwether for how well the hospitality industry is doing," he says, "because 97% of our visitors arrive by air. Over the past few years, even in the recession, it has increased capacity, both domestic and international. During the first quarter of this year, Miami surpassed New York City in number of international flights."

New carriers as well as new flights from airlines that already have a presence in Miami have led to greater connectivity.

For example, LatAm Airlines Group, formed by the recent

merger of Chilean LAN and Brazilian TAM, has added flights from Colombia and more seats on flights from Sao Paulo. Mexico's InterJet and Dutch Antilles Express have added Miami routes. American Airlines added daily flights from Manaus, Brazil, as well as from Seattle. Delta just announced a New York-Miami route. Aeroflot is re-establishing Moscow-Miami flights in October; this winter, Air Berlin is expanding service from Berlin and Dusseldorf.

Soon, international visitors flying American Airlines will be

greeted with smooth, more efficient processing at a new three-level, 400,000-square-foot Federal Inspection Service area in the North Terminal that can process up to 2,000 passengers per hour.

The new AirportLink Metrorail Extension, opening July 28, will whisk passengers to downtown in minutes. "This rapid-transit link from the airport to downtown has solidified Miami as a world-class destination," Mr. Talbert says.

An efficient airport is vital to Miami's continued reign as cruise

capital of the world, and the cruise industry is already responding. Three new-built cruise ships will soon be home-ported at PortMiami, as well as two new cruise brands.

From Metrorail to trolleys, water taxis to the Monkey Shuttle, visitors will find getting around Greater Miami is fun as well as efficient.

World-class connectivity: It's So Miami!

Details: (305) 539-3000,
(800) 933-8448 or
www.MiamiandBeaches.com.